



West Gate Apartments, Royal Victoria Docks, E16 1BN

£385 Per Week

A 1 bedroom apartment for rent situated within this modern development 'The Westgate apartments'

Spacious and bright reception room, modern fitted kitchen, fitted bedroom and modern bathroom suite.

The development is conveniently located on the edge of the stunning Royal Docks E16, just a few stops on the DLR to London City Airport and Canary Wharf.

West Gate Apartments is situated opposite the Emirates cable cars that take you across into Greenwich.

24 hour concierge and on site Gym (gym may require a one off induction fee per tenant)

Comes furnished.

PROPERTY AVAILABLE FROM 10.02.2025

- 1 Bedroom Apartment
- Available From 10.02.2025
- By DLR Station
- Opposite Emirates Cable Cars
- Comes Furnished
- Easy Commute To Canary Wharf
- Near City Airport / Excel
- On The Royal Docks, E16

West Gate Apartments, Royal Victoria Docks, E16 1BN



GYM



LOCAL HOTELS



CONCIERGE



LOCAL RESTAURANTS AND WALKWAYS



EMIRATES AIRLINE CABLE CARS



WEST GATE APARTMENTS

West Gate Apartments, Royal Victoria Docks, E16 1BN



RECEPTION ROOM



BALCONY



RECEPTION ROOM



KITCHEN



BALCONY



BEDROOM

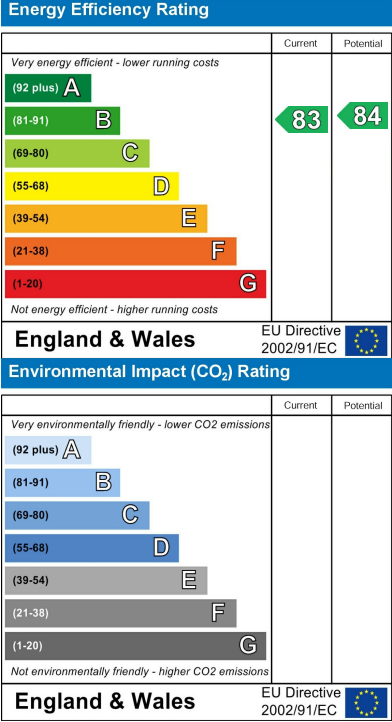
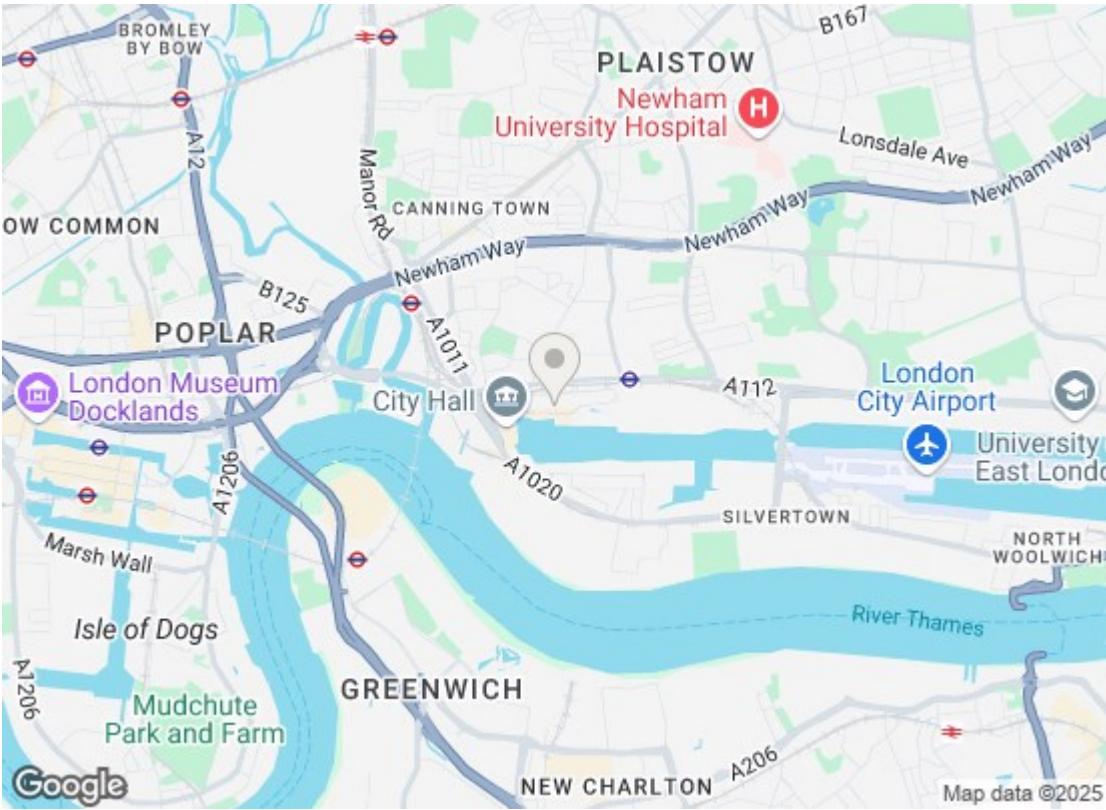
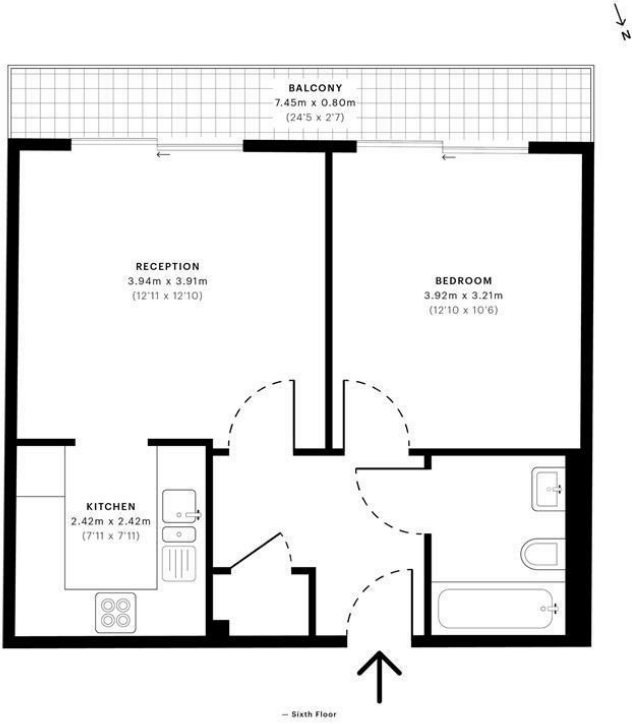
West Gate Apartments, Royal Victoria Docks, E16 1BN



BEDROOM



BATHROOM



We have prepared these property particulars as a general guide to a broad description of the property. They are not intended to constitute part of an offer or contract. We have not carried out a structural survey and the services, appliances and specific fittings have not been tested. All photographs, measurements, floorplans and distances referred to are given as a guide only and should not be relied upon for the purchase of carpets or any other fixtures or fittings. Lease details, service charges and ground rent (where applicable) and council tax are given as a guide only and should be checked and confirmed by your Solicitor prior to exchange of contracts.